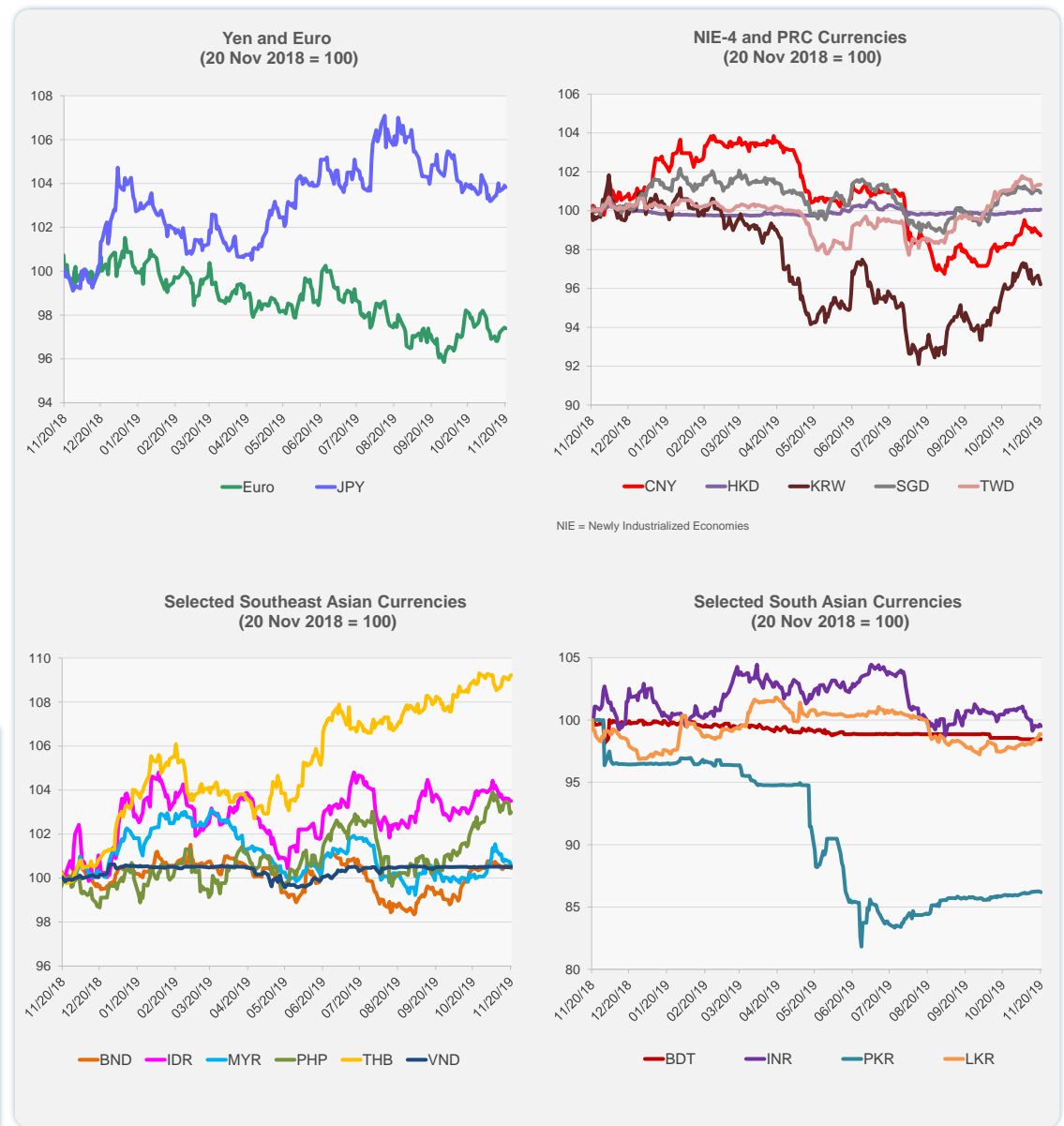
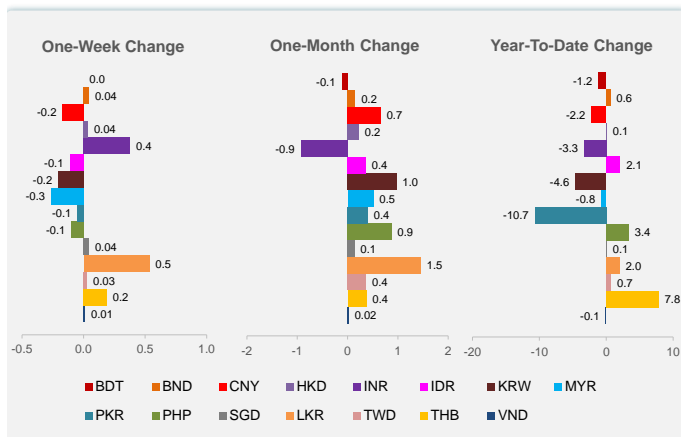


	Latest Closing	% change from Previous Day	% change from 01-Jan-19
Euro	0.90	-0.05	-3.42
Japanese yen (JPY)	108.61	-0.06	1.04
Bangladeshi taka (BDT)	84.88	0.00	-1.18
Brunei dollar (BND)	1.36	-0.10	0.62
Chinese yuan (CNY)	7.04	-0.11	-2.23
Hong Kong dollar (HKD)	7.83	0.03	0.08
Indian rupee (INR)	71.82	-0.14	-3.32
Indonesian rupiah (IDR)	14,095.00	-0.03	2.09
Korean won (KRW)	1,170.05	-0.21	-4.63
Malaysian ringgit (MYR)	4.17	-0.19	-0.76
Pakistan rupee (PKR)	155.49	-0.08	-10.69
Philippine peso (PHP)	50.87	0.06	3.36
Singapore dollar (SGD)	1.36	-0.10	0.07
Sri Lanka rupee (LKR)	179.29	-0.03	1.99
Taipei,China NT dollar (TWD)	30.49	0.04	0.72
Thai baht (THB)	30.19	0.05	7.82
Vietnamese dong (VND)	23,199.00	0.01	-0.10

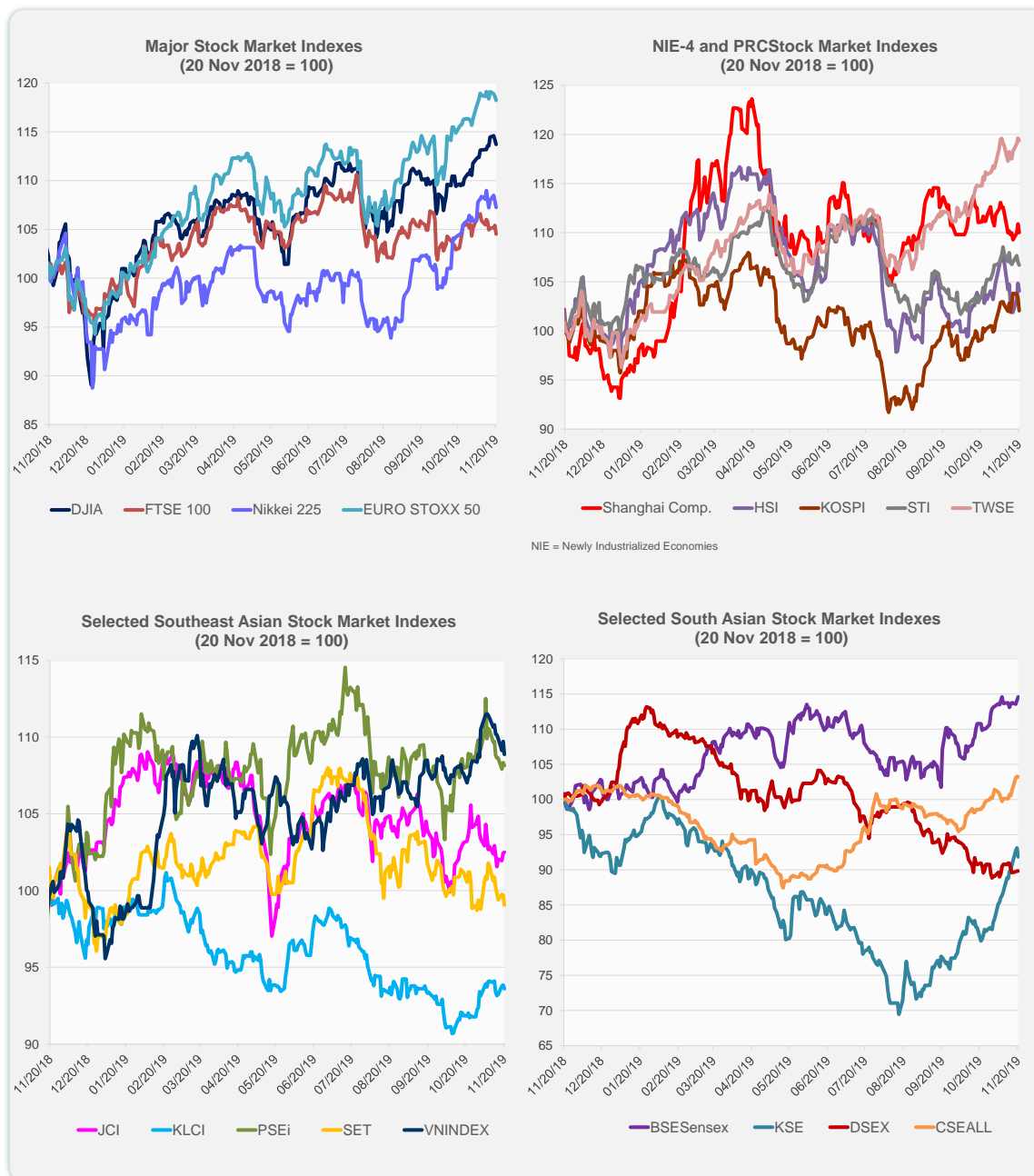
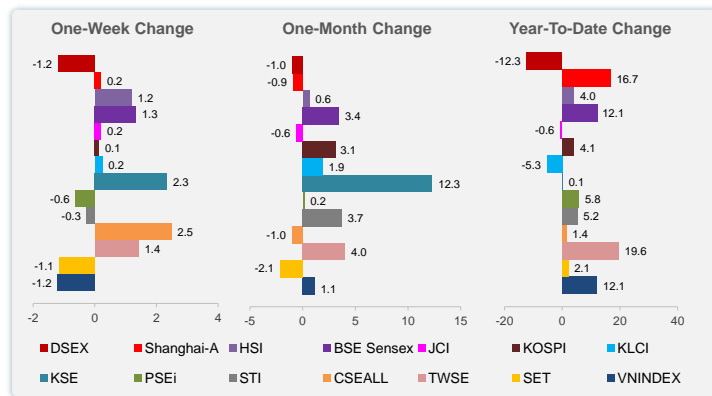


Note: Negative/Decreasing values indicate depreciation of local currency, and positive/increasing values indicate appreciation.
Source: Bloomberg.

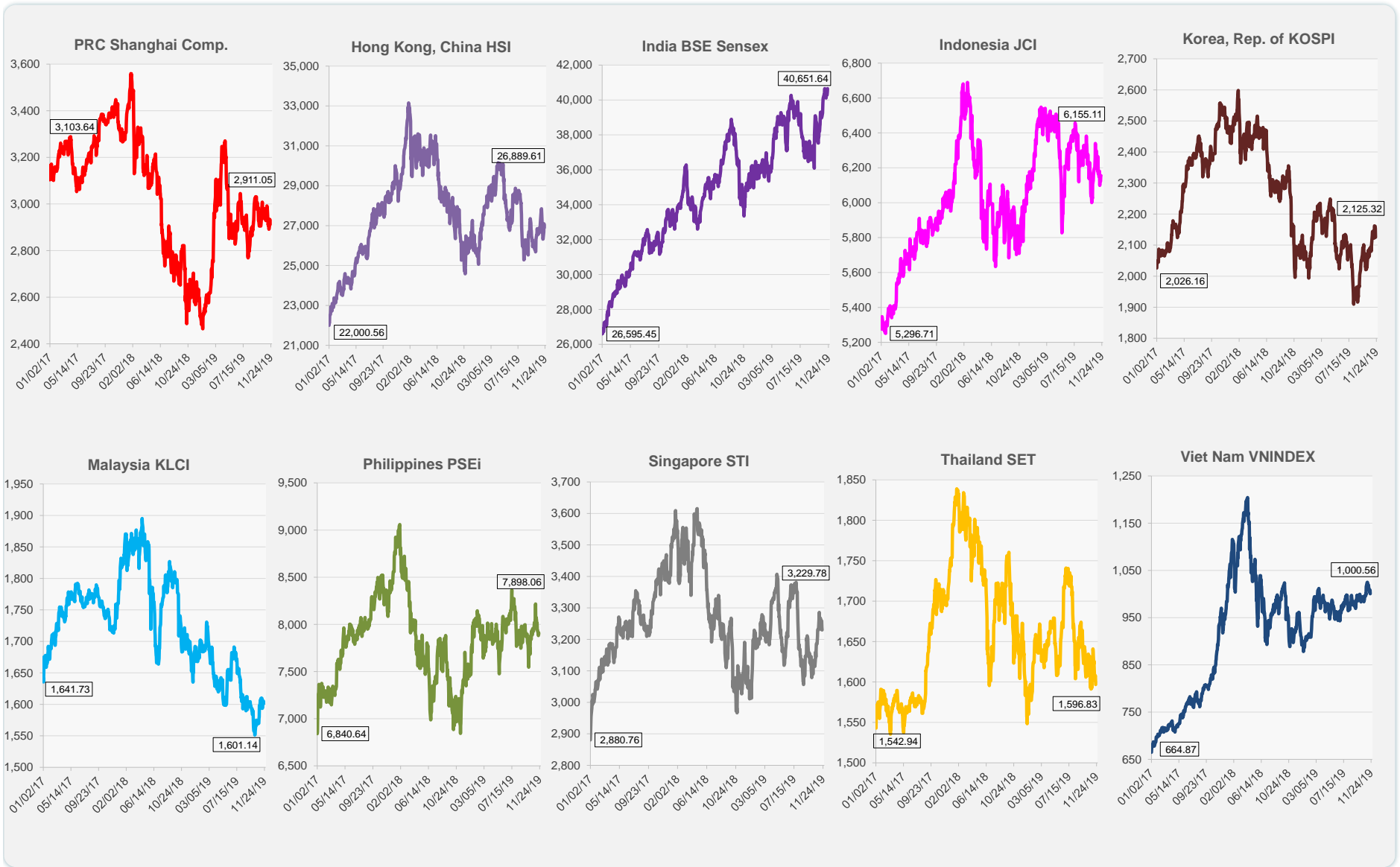


Source: Bloomberg.

	Latest Closing	% change from Previous Day	% change from 01-Jan-19
US Dow Jones Ind Avg	27,821.09	-0.40	19.26
US NASDAQ	8,526.73	-0.51	28.51
US S&P 500	3,108.46	-0.38	24.00
UK FTSE 100	7,262.49	-0.84	7.94
EURO STOXX 50	3,683.88	-0.34	22.74
Japan NIKKEI 225	23,148.57	-0.62	15.66
Bangladesh DSEX	4,722.38	0.01	-12.32
PRC Shanghai Comp.	2,911.05	-0.78	16.73
Hong Kong, China HSI	26,889.61	-0.75	4.04
India BSE Sensex	40,651.64	0.45	12.13
Indonesia JCI	6,155.11	0.05	-0.64
Korea, Rep. of KOSPI	2,125.32	-1.30	4.13
Malaysia KLCI	1,601.14	-0.26	-5.29
Pakistan KSE 100	38,037.68	-1.37	0.11
Philippines PSEi	7,898.06	-0.18	5.79
Singapore STI	3,229.78	-0.28	5.25
Sri Lanka CSEALL	6,138.59	-0.07	1.42
Taipei, China TWSE	11,631.20	-0.22	19.57
Thailand SET	1,596.83	-0.65	2.11
Viet Nam VNINDEX	1,000.56	-0.77	12.10



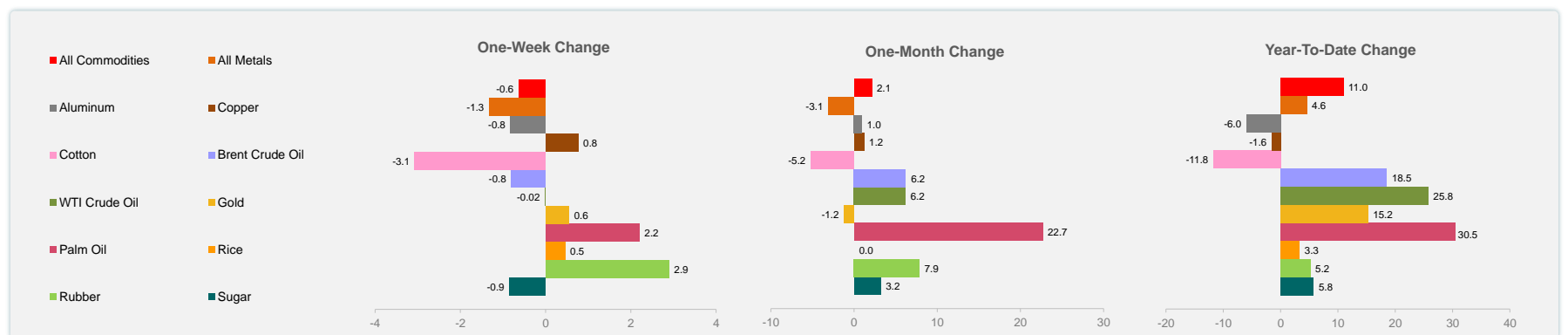
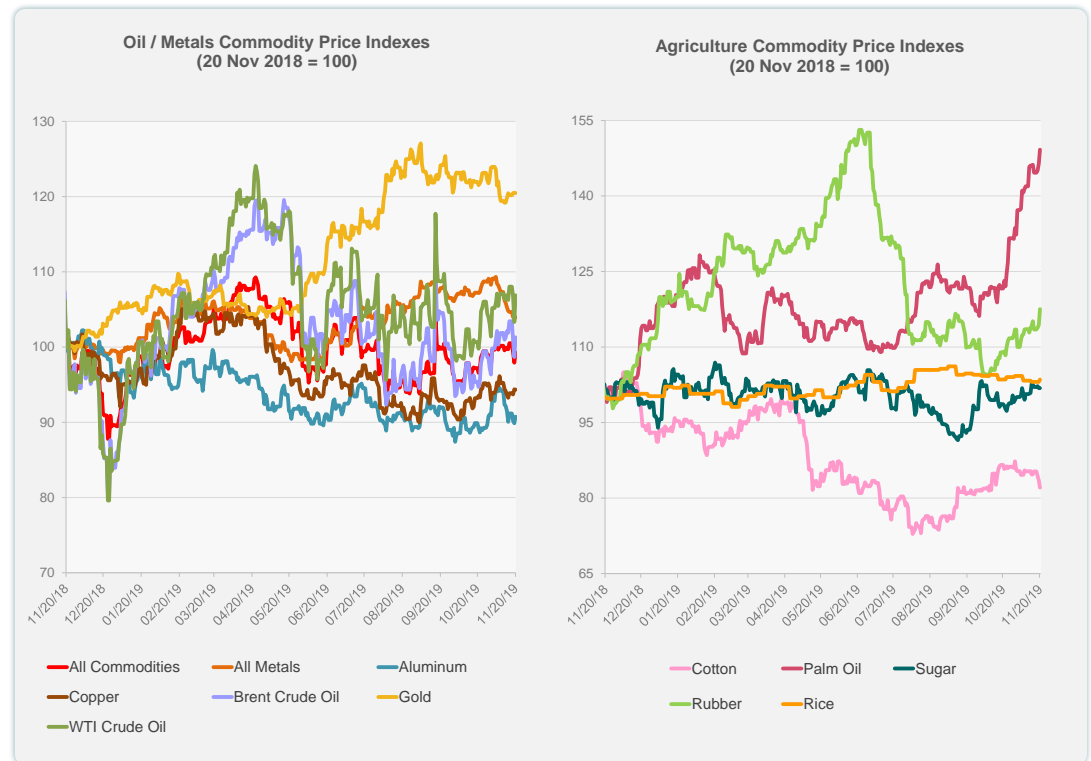
Source: Bloomberg.



Source: Bloomberg.

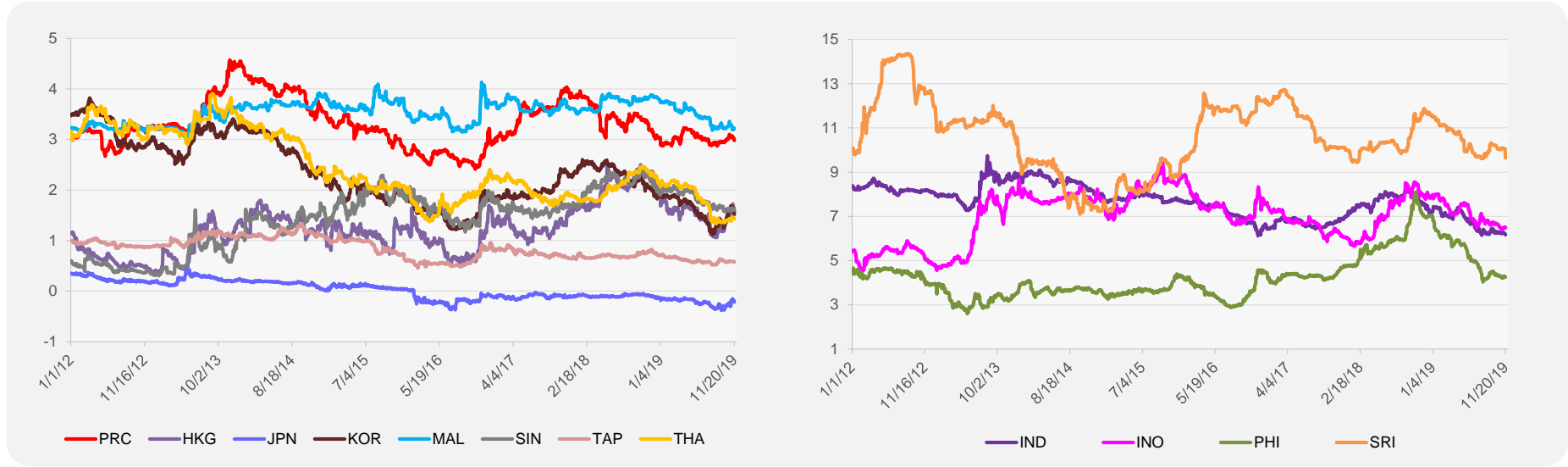
	Unit	Latest Closing	% change from Previous Day	% change from 01-Jan-19
S&P All Commodities	US\$	415.38	1.39	10.97
S&P All Metals	US\$	213.57	-0.29	4.57
Aluminum	US\$/metric ton	1,751.00	0.99	-6.00
Copper	US\$/metric ton	5,855.00	-0.04	-1.58
Cotton	US cents/lb	61.28	-1.72	-11.76
Brent Crude Oil	US\$/barrel	62.61	2.66	18.53
WTI Crude Oil	US\$/barrel	57.11	3.44	25.77
Gold	US\$/troy oz	1,471.63	-0.06	15.23
Palm Oil	US\$/metric tonne	616.57	1.87	30.53
Rice ¹	US\$/metric ton	438.00	0.46	3.30
Rubber ²	US\$/kg	156.20	2.76	5.19
Sugar	US cents/lb	12.82	0.00	5.78

¹ Latest closing price from 19 November 2019.
² Singapore Exchange, Ribbed Smoked Sheet Rubber.

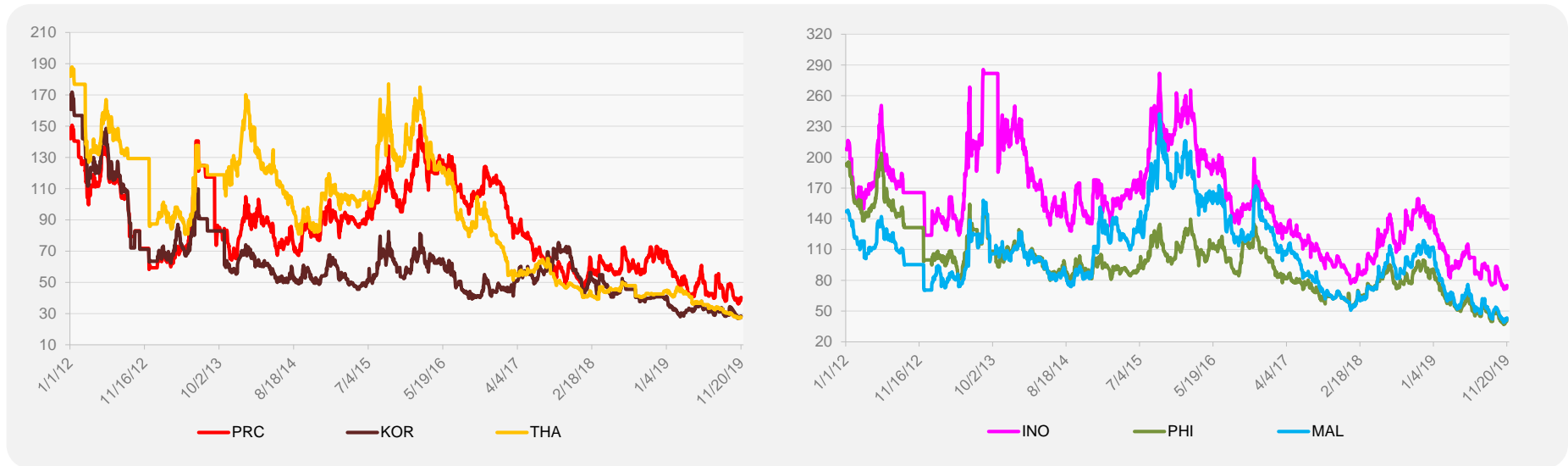


Source: Bloomberg.

5-YEAR LOCAL CURRENCY GOVERNMENT BOND YIELDS (%)



5-YEAR CREDIT DEFAULT SWAP¹



¹ In USD and based on sovereign bonds.
Source: Bloomberg.